

Modulair bouwen waar houdt het op?

Wim Beeftink
Technical director



Marel has a strong market position



**Leading
globally**

in advanced
equipment and
systems for
poultry processing



**Leading
globally**

in advanced
equipment and
systems for
fish processing



**Leading
globally**

in advanced
equipment and
systems for
further processing



**Major global
provider**

of advanced
equipment and
systems for
meat processing



Waar komen we vandaan?



Start of Stork in Boxmeer
(1947)



Start of Stork Poultry Boxmeer
(1963)



mPS
meat processing systems

GEBA

Marel

SCANVAEGT

Marel
food systems

aew

SORTA
WEIGH

norfo

CP FOOD MACHINERY A/S

STORK[®]
Stork Food Systems

CARNITECH

DANTECH
FOOD SYSTEMS PTE LTD

NIJAL[®]

POLS

TOWNSEND

aew **delford**
systems

Delford

THURNE

Doel modularisatie



- Klant:

- Betrouwbare oplossing (gebaseerd op proven technology)
- Flexibel inspelen wensen (uit standards)
- Marktconforme levertijden en installatie doorlooptijd
- Concurrente prijs
- Prijs kwaliteit / verhouding die verrast.
- Zorg voor de installed base

- Company:

- Effectief en efficiënt aanbiedings- en orderproces
- Voorspelbaar financieel resultaat.

zo
saai
zó
saaaai
saaaai

Wat is er voor nodig?

- Sterk multidisciplinair ontwikkelproces, kennis van de markt
- Discipline, specials escalatie proces
- Standaard documentatie
- Infrastructuur (global PLM en SAP)

- KPI

TD2112 TOWNSEND RotoCrumb, type TRC 630

- TD2112A · suitable for breaching a wide range of products with a wide range of crumb mixtures, also including sensitive breakable mixtures
- breaching circulation system consisting of conveyor system, drum, distribution and storage container
- product conveyance by means of a 1/2" wire-mesh belt
- touch screen operation with product selection menus
- blowing-off station at the top
- adjustable presser roll
- attractive product appearance as a result of an almost even cover on all sides due to the unique design with control on the upper and bottom layer former
- minimum breaking of the crumb mixture due to optimal circulation system
- minimum pulverization of the crumb mixture due to friction-free conveyance by means of rotating drum
- frequency-regulated activation of conveyor belt, drum and blower-off
- easy to clean and properly accessible for maintenance
- made of stainless steel and/or corrosion-resistant materials, allowed within the food processing industry

TD2112B1 · removable vibrating plate with vibrating motor

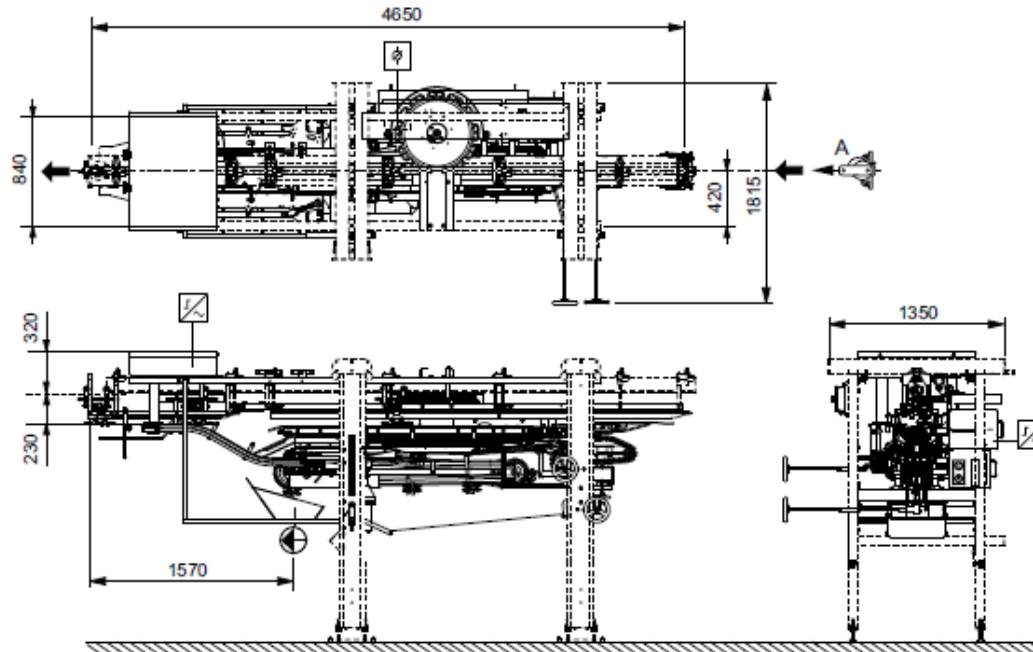
TD2112D0 · belt guide rack:
· passage diameter 25 mm

TD2112D1 · discharge belt without passage:
· 20° adjustable downwards
· passage diameter 25 mm
· length 450 mm

Installed power : 2,3 kW
Belt width : 630 mm
· effective width : 630 mm

Technical data

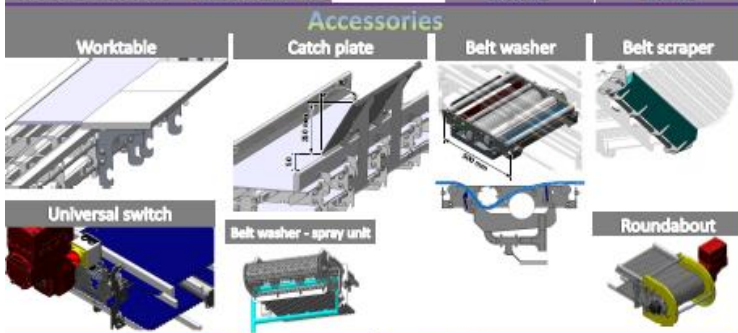
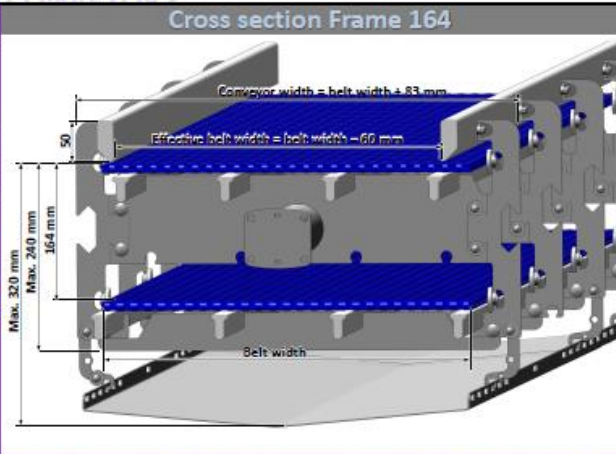
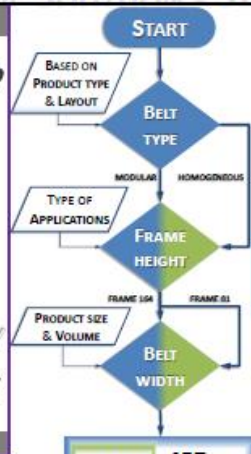
Dimensions in mm



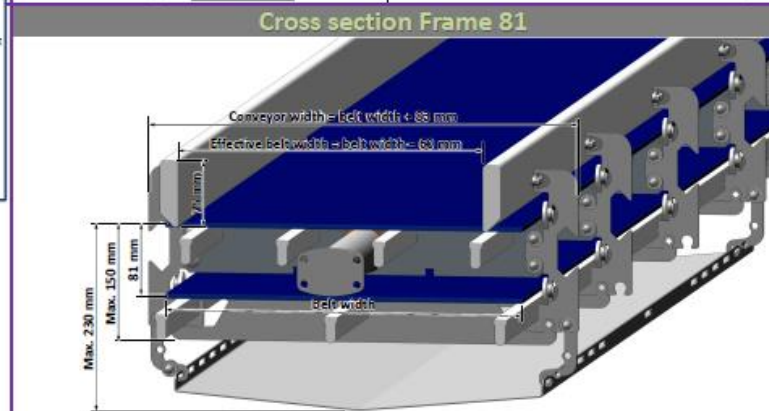
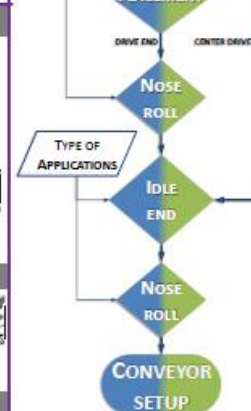
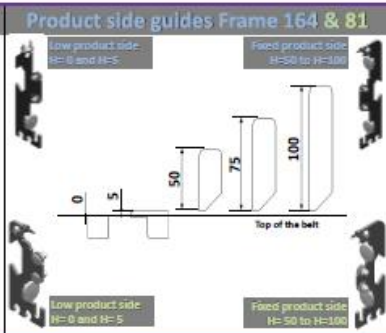
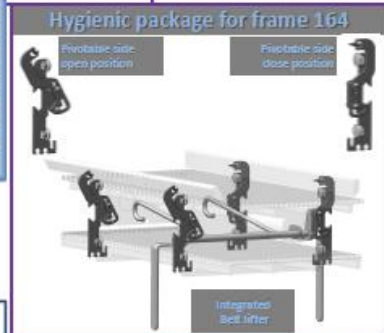
SI units [US units]

MEDIUM		UNIT	TEMPERATURE	CONNECTION	CONSUMPTION
control box		CB1		factory wired [NEC]	
terminal box		TB1		10 x 1 mm ² [NEC]	
AC sensor		S1, S2	24 VAC [120 VAC]	factory wired [NEC]	2 x 0,5 W
drainage				247 mm	
airborne noise emissions			LpA = <70 dB(A)		
mass			850 kg [1875 lb.]		

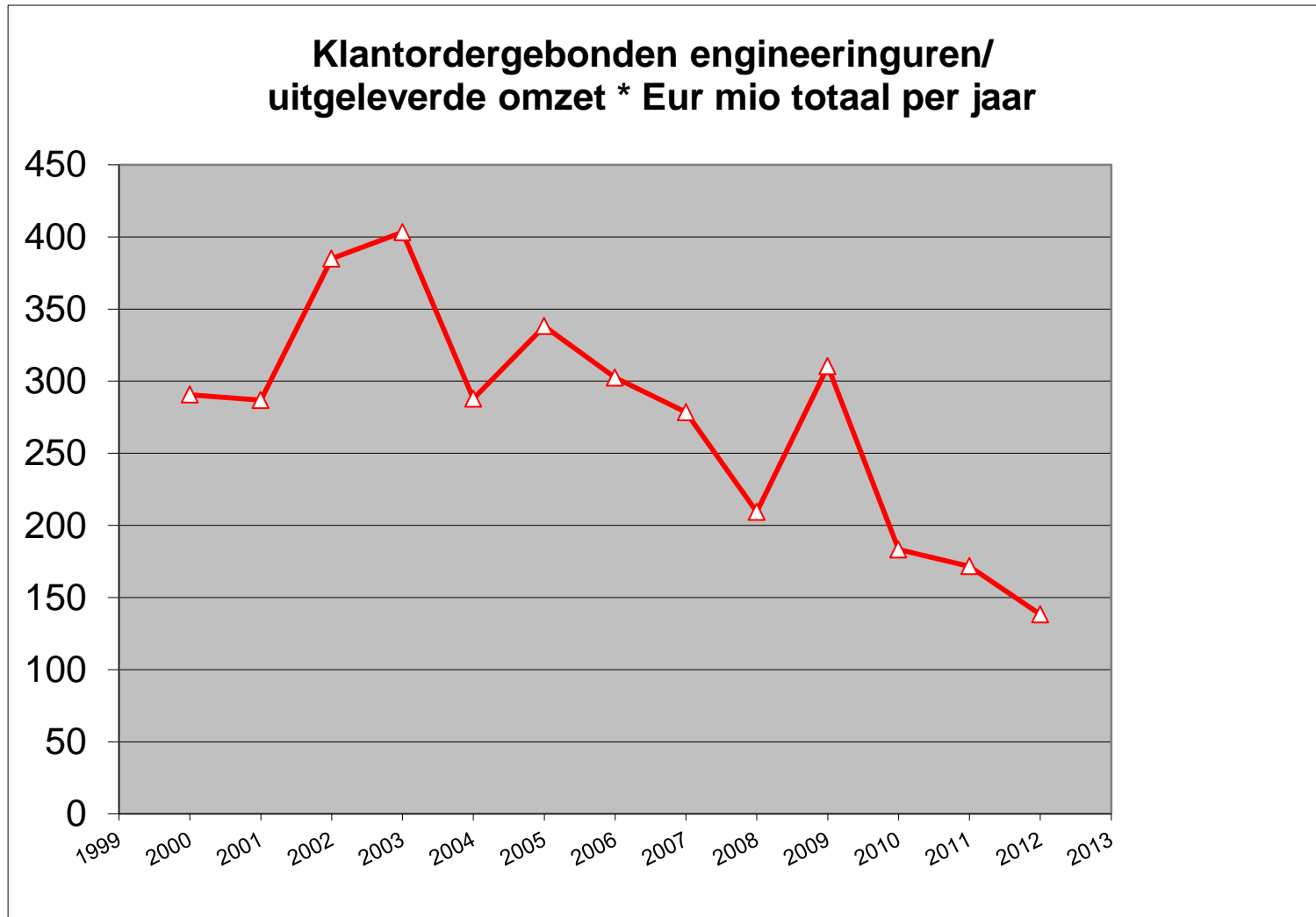
MAREL INTERNAL LOGISTIC SOLUTION - SYSTEMFLEX CONVEYORS



FRAME 81	152	457	FRAME 164
	203	508	
	254	610	
	305	762	
	356	813	
	406	914	
	1067		



KPI



Thank you / Dank u wel / Mange tak / Takk fyrir

